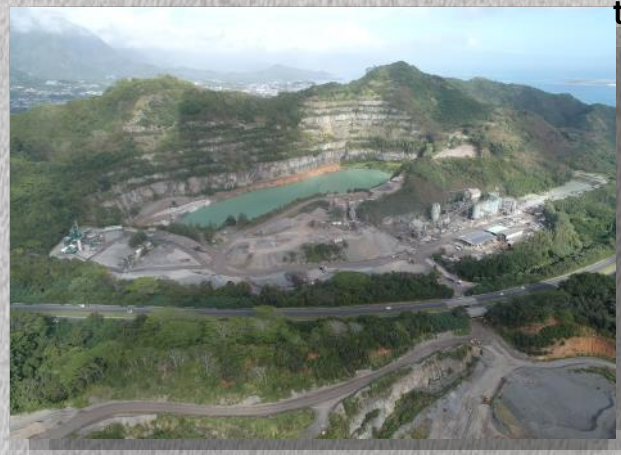




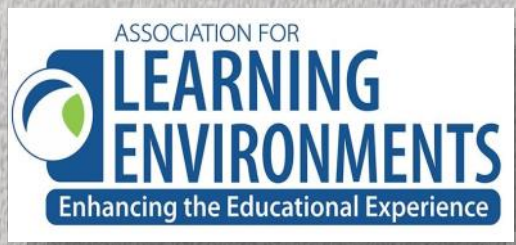
HC&D PLANT & QUARRY TOUR

Thursday, May 30, 2024

We are excited to present a customized plant and quarry tour available at two distinct locations. Attendees have the option to begin either at the Kapaa Quarry or the Sand Island Ready-Mix Plant, then transition to the second location for the continuation of the tour.



The MIH sponsored the Learning Environments 2024 West Region Conference in Honolulu. During this event, educators and members of the design community came together to present their projects. They delved into the intricate and fascinating methods used in constructing schools to enhance learning environments, especially in a culturally diverse society and often times, focused on special education inclusion. Stakeholders also highlighted how the design process is tailored to address the unique needs of students and the broader community.



MCAA Trowel Competition Las Vegas 2024



In January, Affiliated Construction participated in the trowel competition at the World of Concrete. This marks the beginning of several upcoming competitions that will feature a Hawaii presence!



ACE MENTOR PROGRAM

ARCHITECTURE • CONSTRUCTION • ENGINEERING



The MIH formed a team to participate in the cornhole competition aimed at raising scholarships for aspiring young adults entering the construction and design industry. The MIH team, comprising of Scott McFarlane from Dura Constructors and Lisa Kim from the MIH, successfully advanced to the second round of the competition! The event raised \$17,465!



Lisa.masonryhawaii@gmail.com
808-271-4195

MASONRY INSTITUTE OF HAWAII

95-1030 Meheula Pkwy #892711
Mililani, HI 96789-7401

The **Masonry Institute of Hawaii (MIH)** plays a crucial role in shaping educational spaces and is dedicated to backing initiatives aimed at improving these environments. By supporting the constructing and design of schools, their commitment to creating better facilities ensures that students have the best possible setting for their educational journey.

The **Waipahu High School Integrated Academy Facility and Kūlanihāko‘i High School (Kihei High School), Phase 2** projects represent a significant endeavor in enhancing educational facilities. By working with the stakeholders, design community and contractors of these schools, they contribute to fostering optimal learning environments for students. The **MIH** plays a vital role in ensuring that educational spaces are conducive to growth, learning and achievement. Both projects are recipients of the *Project of the Year Award* from the **MIH**.



Above: Waipahu High School Integrated Academy



Above: Kūlanihāko‘i High School (Kihei High School, Phase 2)