

THE MASONRY INSTITUTE OF HAWAII

Masonry in Hawaii

www.masonryhawaii.com

MCAH DONATES TO FOODBANK



Ryan Wada, Lisa Kim presents check to Ron Mizutani

Ron Mizutani, President and CEO Hawaii Foodbank was presented with a \$1,000 donation from the Mason Contractors Association of Hawaii. **Ryan Wada**, President MCAH and **Lisa Kim**, Administrator MCAH met with Ron on Wednesday, September 16, 2020 at the Hawaii Foodbank located in Mapunapuna. Ron took the group on a brief tour of the warehouse. Because of the Covid19 pandemic, the Hawaii Foodbank has well exceeded their \$400,000 annual budget. While food donations have been minimal, Ron said the donation from MCAH will help to keep the Foodbank's shelves stocked for any future natural disaster and continue feeding families during the Covid19 pandemic.



Ryan Wada, Lisa Kim, Ron Mizutani and Danny Fujioka

YOUR QUESTIONS?

John Chrysler, Masonry Institute of America

Mr. John Chrysler was asked where and how often control joints are required in concrete masonry walls. John referred to National Concrete Masonry Associations technical documents for the answer. There are two methods for determining where control joints are required: Alternative Engineered Method and an Empirical Method. TEK 10-3 provides information on the empirical method which is the most commonly used method and is applicable to most conventional building types. TEK 10-2 provides information on the engineered method which is generally used only when unusual conditions are encountered such as dark colored units in climates with large temperature swings. TEK publications may be obtained by calling the National Concrete Masonry Association at 703-713-1900.

An engineer requested information on an existing concrete masonry wall's compressive strength. The masonry wall was built in the 1980's and the engineer was attempting to confirm what f'm should be used. The question: Is there a way to determine what is the block strength based on ASTM C90 and Grade N-II? John's response: The strength requirement for a N type unit was 1,000 psi based on the GROSS AREA of the unit or about 119,000 pounds. Today we use 2,000 psi based on the NET area, which equates to about 116,000 pounds. To further verify the strength is to perform destructive testing. The recommended way is to cut an in-wall prism, 8 inches long and 16 inches tall and test in accordance with ASTM C1314.

GROUT AND MORTAR SEMINAR

The Grout and Mortar Seminar scheduled for 2020 has been postponed until 2021. Mr. John Chrysler will schedule the seminar as soon as the 14-day quarantine requirement from the State of Hawaii is lifted. Please visit www.masonryhawaii.com for updates on the seminar.

THE MASONRY INSTITUTE OF HAWAII

Masonry in Hawaii

www.masonryhawaii.com

MCAH AWARDS 2020 SCHOLARSHIPS

The 2020 MCAH Scholarship Golf Tournament which is usually held in June was cancelled due to the Covid-19 pandemic and the lockdown of local golf courses. However, the MCAH members voted to continue to award academic scholarships to our local students to help subsidize their school expenses. The MCAH scholarship committee voted to award six (6) students \$2,000.00 each for outstanding academic credentials and for service work in their community. The following are the 2020 MCAH Scholarship recipients:

Jonilyn Cabatic is attending Grand Canyon University in Phoenix, Arizona and is majoring in Biology with an emphasis in pre-physical therapy. Jonilyn is a volunteer with the “Feed the Starving Children” organization in the Phoenix area. Jonilyn’s parents are **Dionisio and Marilyn Cabatic** from Local 368.



Jonilyn Cabatic

Kelvin Rasmussen attends Chapman University in Orange, California and is studying Business. Kelvin was active in volleyball while attending Kamehameha School Kapalama. Kelvin represented Kamehameha at the National Speech and Debate Tournament in Alabama. His parents are Noel and Lauri Rasmussen from Local 1.



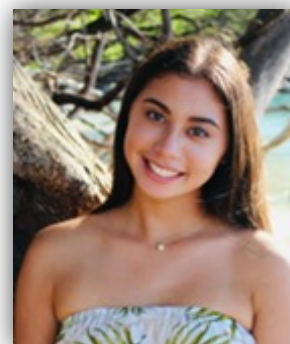
Kelvin Rasmussen

Representing MCAH is **Amy Carrasco** who is studying Communication Disorders at BYU in Salt Lake City, Utah. Amy’s parents are **David and Judy Brown**.



Amy Carrasco

Ms. Zane Garrigan is matriculating at Southern Utah University in the field of biology. She was involved with coaching youth soccer teams while living in Kealahou, Kona. Her parents are **James and Rachel Garrigan** from Local 368.



Zane Garrigan

THE MASONRY INSTITUTE OF HAWAII

Masonry in Hawaii

www.masonryhawaii.com

Reyna Iwamoto represents SEAHO and is studying Journalism and Communications at Long Island University Brooklyn. Reyna is a long-distance swimmer on the LIU swimming team and is competing at the NCAA Division I level. Her parents are **Ron Iwamoto and Andrea Iwamoto**.



Reyna Iwamoto

CONGRATULATIONS to all the winners of the 2020 MCAH Scholarships. Information on the 2021 MCAH Scholarship Golf Tournament to be tentatively held on June 25, 2021 and the scholarship information will be posted on www.masonryhawaii.com in early 2021.

Representing Local 630 is **Sophia Rodriguez** of Kapaa, Kauai. Her parents are **Lawrence and Dawn Rodriguez**. Sophia graduated summa cum laude from Kapaa High School and is an avid paddler. Her field of study is Environmental Studies at the University of Hawaii Hilo.



Sophia Rodriguez